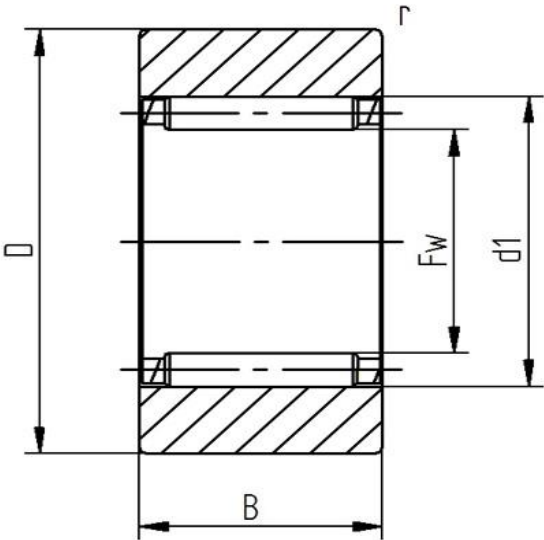


Data sheet - Support roller RSTO 40TN X (cylindrical)

Designation	RSTO 40 X
Type	cylindrical
D [mm]	80
d [mm]	
F, Fw * [mm max.]	50
B1 [mm]	
B [mm]	19,8
d1 [mm]	58
r [mm]	1
Dynamic load Crw [N]	24000
Static load C0rw [N]	39000
Speed limit [min-1]	1700



Every specification has been edited and verified carefully. STI Bearings GmbH assumes no liability for potential errors or incompleteness. Technical modifications are subject of changes.  
© 2020 by STI Bearings GmbH  
Reproduction, even excerpts, only with our approval.